



# 6752-100 Series Circuit Breakers

Ambient Compensated Single & Three Phase High, Short Circuit Capacity

## Features

- **Current ratings from 50-100 amps**
- **Proven reliability and performance of the 6752 series circuit breaker**
- **Usable on large electrical systems – 6000 amperes interrupting capacity**
- **Circuit protection unaffected by temperature fluctuations – ambient compensated from -40°F to +160°F**
- **Military approved (including high sine vibration capability) to MS 25361 and MS 25361 (V)**



6752-100

## Overview

The Klixon® 6752-100 series thermal-magnetic circuit breakers are ambient compensated and trip-free. These circuit breakers are designed and manufactured to meet stringent military standards with the reliability of the original 6752 design. The 6752-100 is similar to the 6752-12 in size, and includes current ratings ranging from 50-100 amps.

The higher short circuit capacity, vibration resistance and longer cycling life of the 6752-12 and -300 series exceed previous military standards. In addition, the 6752-12 and -300 series provide ambient compensation, fault coordination of all ratings, and an option for auxiliary circuits.

## High Short Circuit Capacity

A deionizing grid and magnetic assist enable the 6752-100 series to successfully interrupt four fault 6000 amp currents, two at sea level and two at 60,000 feet, on either a 120 VAC , 400 Hz system or a 30 VDC system.

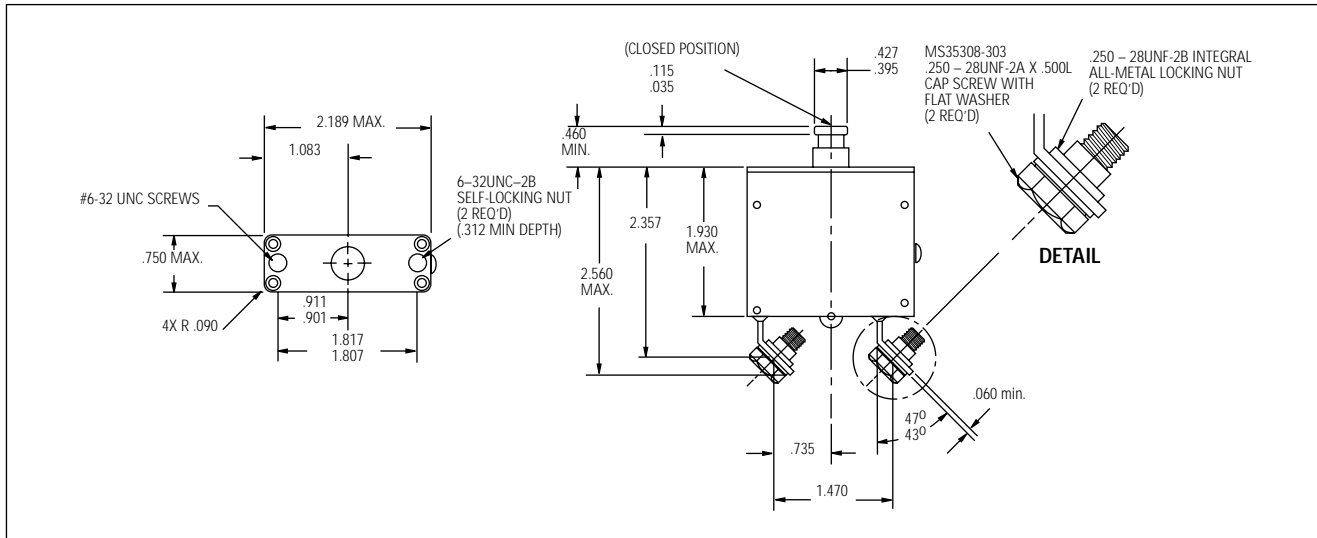
## Ambient Temperature Compensation

The 6752-100 series circuit breakers maintains its performance capabilities by means of a thermal compensator in the temperature range of -40°C to +70°C.

### MIL Qualification

TI Number	MS Number	TI Number	MS Number
6752-100-50	MS 25361-50	6752-102-50	MS25361-50V
6752-100-60	MS 25361-60	6752-102-60	MS25361-60V
6752-100-70	MS 25361-70	6752-102-70	MS25361-70V
6752-100-75	MS 25361-75	6752-102-75	MS25361-75V
6752-100-80	MS 25361-80	6752-102-80	MS25361-80V
6752-100-90	MS 25361-90	6752-102-90	MS25361-90V
6752-100-100	MS 25361-100	6752-102-100	MS25361-100V

### Envelope Dimensions



### Performance Characteristics

Vibration\* ..... 10 G's minimum, 50-2000 Hz  
 Mechanical Shock ..... 30 G's  
 Acceleration ..... 10 G's  
 Weight ..... 0.25 lbs (114 gm) max.

### 6752-100 Calibration

Temp °C	Min ULT Trip	Max ULT Trip	Trip Time - Seconds		
			200%	400%	1000%
+25	105%	138%	15-65	2-10	1.4
-40	125%	165%	15-65	2-10	1.4
+70	70%	125%	15-65	2-10	1.4

### Interrupt Current

120 VAC, 400 Hz: 3500 amps  
 28 VDC: 6000 amps

### Endurance

5000 cycles ..... 120 VAC, 400 Hz Resistive  
 5000 cycles ..... 120 VAC, 400 Hz Inductive  
 5000 cycles ..... 28 VDC, 400 Hz Resistive  
 2500 cycles ..... 28 VDC, 400 Hz Inductive  
 5000 cycles ..... no load

\* Other vibration levels available. Contact factory for details.

### Approximate Time-Current Curves - 6752-100 Circuit Breakers

