

59 Rue Emile Deschanel
92400 Courbevoie, France

Tél : 33 (0)1 46 91 93 30
Fax : 33 (0)1 46 91 93 39

Klixon® 9115 Series (Waterproof) 15 to 30 Amp Precision, Ignition Protected Thermal Breakers

- Ignition protected
- Waterproof: meets the requirements of MIL-E-13856
- Meets requirements of commercial item description A-A-55571 for all federal agencies
- Reliable performance: utilizes the accepted snap-acting Klixon disc
- Maximum cable efficiency: calibration and thermal disc allow maximum usage of wiring capacity

In addition to a completely sealed thermal element, the 9115-5 (automatic reset) and 9115-6 (manual reset) types also have molded-in electrical terminals and are supplied with rubber connectors (shells).



Performance

| Characteristics | |
|----------------------|---|
| Calibration | At 25°C (77°F) hold 115% and trip 138% |
| High Potential Test | 1000 volts rms — 60Hz for 1 minute |
| Vibration Resistance | 1055 cps 1.52 (.060") excursion for 3 hours |
| Shock Resistance | 100G, 30 times per MIL-STD-202 |
| Corrosion Resistance | 100 hours per MIL-STD-202 |
| Fungi Resistance | Per specification MIL-F-13927 |
| Waterproof | Per specification MIL-STD-1184 |
| Dustproof | Per specification MIL-STD-810 |
| Approximate Weight | 6.3 grams (2.25oz) |

Applications

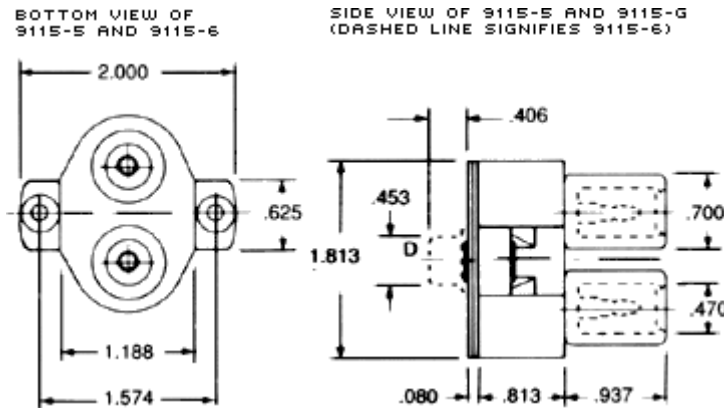
- Completely waterproof electrical systems of ordinance vehicles
- Mobile military ground equipment, including trucks, tractors, graders, earth movers, fuel units and amphibious, as well as commercial, vehicles

59 Rue Emile Deschanel
92400 Courbevoie, France

Tél : 33 (0)1 46 91 93 30
Fax : 33 (0)1 46 91 93 39

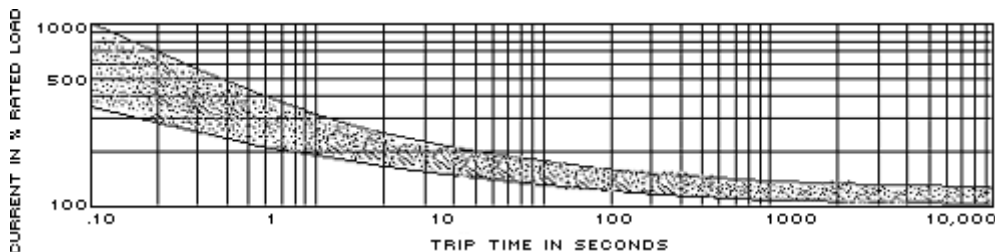
General Envelope Dimensions

Nominal dimensions provided for reference only.



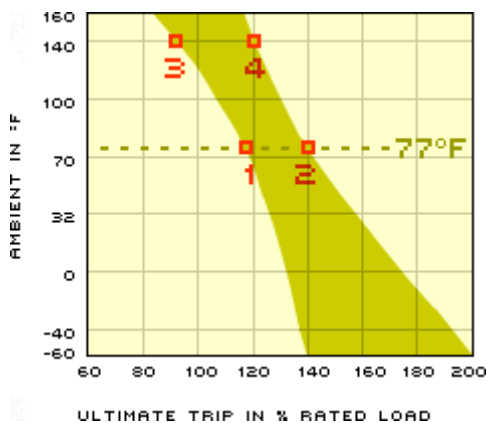
Trip Curve

Approximate Time — Current Characteristics at 77°F (25°C)



Derating Curve

Approximate Effect of Ambient Temperature on Ultimate Trip



Performance characteristics are based on room temperature (77°F). Consult derating curve at left for ambient temperatures significantly higher or lower than standard room temperature.

Example: At 77°F the device is calibrated to hold at 110% of rated current (1) and trip at 138% of rated current (2). At 140°F, the same device will hold at approximately 92% of rated current (3), and trip at approximately 120% of rated current (4).