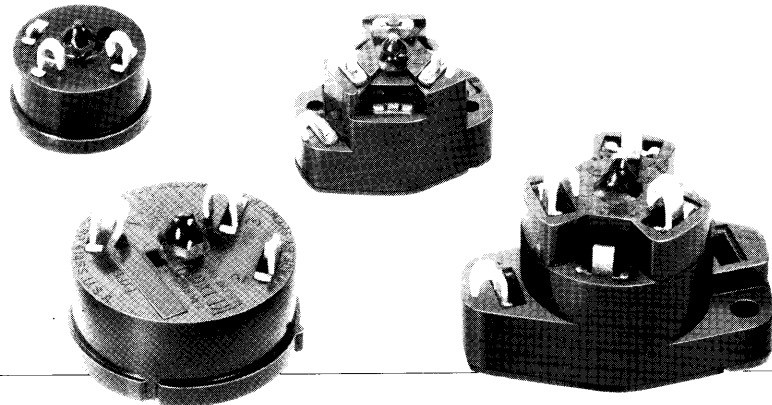


Motor Protectors

Aircraft Single Phase and Three Phase

- Complete motor analog
- Locked rotor protection
- Ultimate trip protection
- Neutral tap
- Meets the thermal protection requirements of MIL-M-7969, direct acting type, Method III

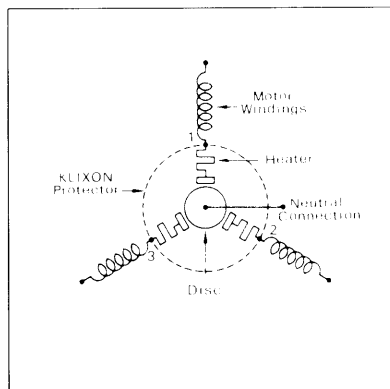


Klixon inherent motor protection for aircraft prevents hazards beyond the control of the manufacturer such as sustained overload and excessive temperatures. Since the protecting devices are sensitive to both temperature and current, they protect against a variety of abnormal conditions while allowing maximum motor output before shutdown. Motor life is extended by limiting damaging temperatures to the designed level.

Description

The inherent protector is basically a bimetallic thermostat with a built-in heating element, installed in series with the motor winding.

The actuating element of the protector is the Klixon snap-acting thermal disc. The built-in heaters simulate winding temperatures caused by increases in current. The protector provides crisp, positive switching when the specified trip current is sustained for a specified duration, at room temperature. The device will also actuate with an excessive ambi-



ent temperature condition. Alone, the disc protects against excessive ambient temperature and the heaters protect against excessive current increases as experienced during locked rotor conditions. Together, the heaters and disc protect against any combination of overload and ambient conditions.

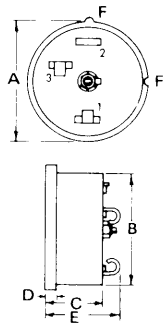
Standard ratings are available in approximately 5% current steps at ultimate trip for motors with maximum allowable temperatures of 120°C, 150°C, 175°C and 200°C. Maximum current is based on 28 VDC or 120 VAC.

A proper application can be made only by acquiring test samples from the factory.

Special Applications

Single Phase Motor Protectors

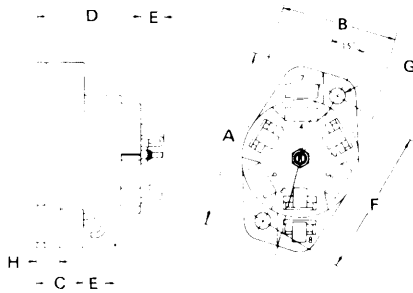
Open Type



	SKA	MKA	KA
Approx. Weight (ounces)	.125	.250	.500
Maximum Capacity	16 amps	50 amps*	100 amps*
A (max dia)	.688	.937	1.218
B (dia)	.638	.876	1.156
C	.344	.420	.500
D	.093	.093	.125
E (max)	.520	.625	.750
F (radius)	.035	.035	.035

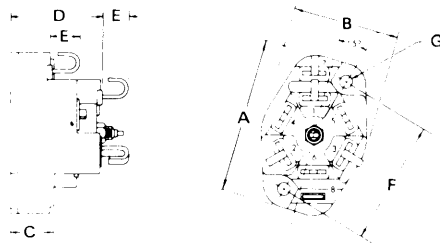
Three Phase Motor Protectors

Types BJE & MJE



	BJE	MJE
Approx. Weight (ounces)	2.750	.625
Maximum Capacity	120 amps*	60 amps*
A (max)	2.457	1.635
B (max)	1.565	.975
C	.609	.390
D (max)	1.380	.863
E (max)	.312	.188
F	1.937	1.312
G (dia)	.218	.152
H	.250	.250

Type SJE



Approx. Weight (ounces)	.375
Maximum Capacity	30 amps*
A (max)	1.072
B (max)	.735
C	.298
D	.630
E (max)	.165
F	.812
G (dia)	.090
H	—

All dimensions Nominal / in inches
 *Actual device may vary. Consult factory.